

Accessories—One-Touch Fittings

NPC, PC, POC series



Ordering code

NPC NPC 1/4 - 1/8

① ② ③

① Model

NPC: Male connector



② Port size

1/8: Φ 1/8"
 5/32: Φ 5/32"
 1/4: Φ 1/4"
 5/16: Φ 5/16"
 3/8: Φ 3/8"
 1/2: Φ 1/2"

③ Thread connection

Thread connection	Adaptable port size
U10: #10-32UNF	Φ 1/8", Φ 5/32", Φ 1/4"
1/8: NPT1/8	Φ 5/32", Φ 1/4"
1/4: NPT1/4	Φ 5/16", Φ 3/8"
3/8: NPT3/8	Φ 1/2"
1/2: NPT1/2	

PC, POC PC 6 01

① ② ③

① Model

PC: Male connector



POC: Male connector



② Port size

4: Φ 4mm
 6: Φ 6mm
 8: Φ 8mm
 10: Φ 10mm
 12: Φ 12mm

③ Thread connection

Thread connection	Adaptable port size
M5: M5X0.8	Φ 4, Φ 6
01: PT1/8	Φ 4, Φ 6
02: PT1/4	Φ 8, Φ 10
03: PT3/8	Φ 12
04: PT1/2	

Table for interface port and tube O.D.

Product series	Thread type	Port size					
		Φ 1/8"	Φ 5/32"	Φ 1/4"	Φ 5/16"	Φ 3/8"	Φ 1/2"
NPC	#10-32UNF	●	●	●	●	●	●
	NPT1/8		●	●	●	●	●
	NPT1/4			●	●	●	●
	NPT3/8			●	●	●	●
	NPT1/2					●	●

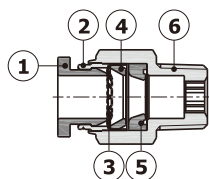
Product series	Thread type	Port size				
		Φ 4	Φ 6	Φ 8	Φ 10	Φ 12
PC	M5	●	●			
	PT1/8	●	●	●	●	●
	PT1/4	●	●	●	●	●
	PT3/8		●	●	●	●
	PT1/2		●	●	●	●
POC	M5	●	●			
	PT1/8	●	●	●	●	
	PT1/4	●	●	●	●	●
	PT3/8			●	●	●
	PT1/2				●	●

Specification

Operating pressure range	0~145psi(0~1.0MPa)
Negative pressure	10Torr(-750mmHg)
Proof pressure	215psi(1.5MPa)
Ambient and fluid temperature	-5~160°F (-20~70°C)
Applicable tubing	Soft nylon or polyurethane

Inner structure

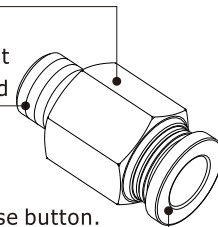
NPC,PC Series



No.	Item	No.	Item
1	Release button	4	Chuck
2	Guide	5	O-ring
3	Spring gasket	6	Body

Product feature

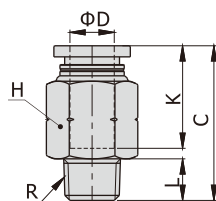
- The compact appearance space saving.
- The threaded portion is covered with sealant and the M5 or #10-32UNF thread is attached with a sealing gasket to prevent air leakage over the connection thread portion.
- PC,PCO series: Grey is optional for the release button.



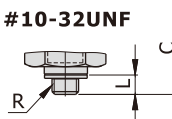
NPC, PC, POC series

Dimensions

NPC Series



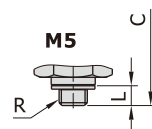
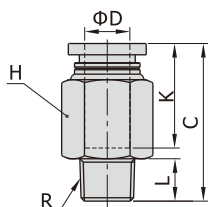
#10-32UNF



[Unit: inch]

Model\Item	ΦD	R	L	C	K	H(Across flat)	Weight(g)
NPC1/8-U10	1/8	#10-32UNF	0.14	0.63	0.45	9/32	2.0
NPC5/32-U10	5/32	#10-32UNF	0.14	0.67	0.49	5/16	2.7
NPC5/32-1/8		NPT1/8	0.30	0.69	0.53	7/16	6.4
NPC1/4-U10	1/4	#10-32UNF	0.14	0.89	0.65	1/2	10.0
NPC1/4-1/8		NPT1/8	0.30	0.87	0.65	1/2	8.6
NPC1/4-1/4		NPT1/4	0.39	0.96	0.73	9/16	16.0
NPC1/4-3/8		NPT3/8	0.43	0.89	0.73	11/16	24.7
NPC5/16-1/8	5/16	NPT1/8	0.30	1.10	0.73	9/16	14.3
NPC5/16-1/4		NPT1/4	0.39	1.06	0.79	9/16	13.6
NPC5/16-3/8		NPT3/8	0.43	0.93	0.79	11/16	21.7
NPC3/8-1/8	3/8	NPT1/8	0.30	1.18	0.83	11/16	22.4
NPC3/8-1/4		NPT1/4	0.39	1.28	0.83	11/16	25.9
NPC3/8-3/8		NPT3/8	0.43	1.10	0.83	11/16	21.8
NPC3/8-1/2		NPT1/2	0.55	1.04	0.83	7/8	38.5
NPC1/2-1/4	1/2	NPT1/4	0.39	1.38	0.91	7/8	47.9
NPC1/2-3/8		NPT3/8	0.43	1.34	0.91	7/8	33.8
NPC1/2-1/2		NPT1/2	0.55	1.28	0.91	7/8	46.4

PC Series



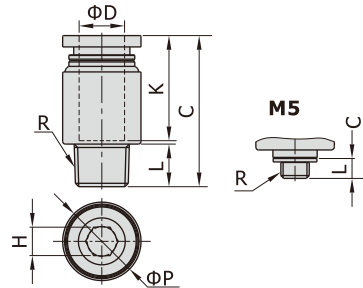
[Unit: mm]

Model\Item	ΦD	R	L	C	K	H(Across flat)	Weight(g)
PC4M5	4	M5×0.8	3.5	19.5	14	9	6.5
PC401		PT1/8	7.5	19.5	14	10	7
PC402		PT1/4	10	19.5	14	14	13.5
PC6M5	6	M5×0.8	3.5	22.5	16.5	12	8.5
PC601		PT1/8	7.5	22.0	18.5	12	7.5
PC602		PT1/4	10	24.5	18.5	14	15.5
PC603		PT3/8	11	22.5	18.5	17	24
PC604	PT1/2	14	26.0	18.5	21	46	
PC801	8	PT1/8	7.5	28	18.5	14	13.5
PC802		PT1/4	10	27	18.5	14	13
PC803		PT3/8	11	23.5	18.5	17	21
PC804		PT1/2	14	27	18.5	21	43.5
PC1001	10	PT1/8	7.5	30	21	17	20.5
PC1002		PT1/4	10	32.5	21	17	24
PC1003		PT3/8	11	28	21	17	20.5
PC1004		PT1/2	14	26.5	21	21	36
PC1201	12	PT1/8	7.5	32.5	23	21	38.5
PC1202		PT1/4	10	35	23	21	40.5
PC1203		PT3/8	11	30.5	23	21	28.5
PC1204		PT1/2	14	32.5	23	21	41.5

Accessories—One-Touch Fittings

NPC, PC, POC series

POC Series



[Unit: mm]

Model\Item	ΦD	R	ΦP	L	C	K	H(Across flat)	Weight(g)
POC4M5	4	M5×0.8	9	3.5	18.5	14	2.5	3.6
POC401		PT1/8	10	7.5	18	14	3	5.5
POC402		PT1/4	14	10	19.5	14	3	12.6
POC6M5	6	M5×0.8	12	3.5	21.5	16.5	2	5.9
POC601		PT1/8	12	7.5	22.0	18.5	4	6.3
POC602		PT1/4	14	10	22.0	18.5	4	11.8
POC801	8	PT1/8	14	7.5	26.5	18	5	9.9
POC802		PT1/4	14	10	25	18	6	10.1
POC803		PT3/8	17	11	23.5	18	6	19.3
POC1001	10	PT1/8	17	7.5	30	21	5	16.5
POC1002		PT1/4	17	10	29	21	6	15.4
POC1003		PT3/8	17	11	28	21	8	18.7
POC1004		PT1/2	21	14	26.5	21	8	35.3
POC1202	12	PT1/4	21	10	34.5	23	6	32.3
POC1203		PT3/8	21	11	30	23	8	25.1
POC1204		PT1/2	21	14	32	23	8	37.5